

3 Cards ABC Reward Catalog

Look inside for new
items, new styles,
and new colors.

****Please Note****

Exchanges and/or returns are
NOT allowed unless a mistake
is made in ordering, or if there
is a defect in the item upon
receiving it. Sizing charts have been
added for your convenience.

Revised 8.14.2025

#301 Ladies Denim Jacket



Ladies Sizes:
XS—4XL

- 13.75-ounce, 100% stonewashed indigo denim
- Two button-through flap chest pockets
- Button cuffs
- Front pockets

| | XS | S | M | L | XL | XXL | 3XL | 4XL |
|------|-------|-------|-------|-------|-------|-------|-------|-------|
| Size | 2 | 4/6 | 8/10 | 12/14 | 16/18 | 20/22 | 24/26 | 28/30 |
| Bust | 32-34 | 35-36 | 37-38 | 39-41 | 42-44 | 45-47 | 48-51 | 52-55 |

3 ABC CARDS

#302 Denim Jacket

Adult Sizes:
XS—4XL



- 13.75-ounce, 100% stonewashed indigo denim
- Two button-through flap chest pockets
- Button cuffs
- Front pockets
- Adjustable button waist tabs

| | XS | S | M | L | XL | XXL | 3XL | 4XL |
|------|-------|-------|-------|-------|-------|-------|-------|-------|
| Size | 2 | 4/6 | 8/10 | 12/14 | 16/18 | 20/22 | 24/26 | 28/30 |
| Bust | 32-34 | 35-36 | 37-38 | 39-41 | 42-44 | 45-47 | 48-51 | 52-55 |

3 ABC CARDS

#303 Hooded Charger Jacket

**Adult Sizes:
XS—4XL**

**Polyester shell with heavyweight
fleece body and hood lining.**



- 100% polyester Taslan shell
- 8.3-ounce, 100% polyester fleece body lining
- 100% polyester heavyweight polyfill sleeve lining
- Molded center front zipper
- Front zippered slash pockets
- Hood with drawcord and toggles
- Interior pockets: one zippered, one hook and loop closure
- Port Pocket™ for easy embroidery access
- Elastic cuffs with tabs for adjustability
- Open hem with drawcord and toggles

SIZE CHART

| | XS | S | M | L | XL | 2XL | 3XL | 4XL |
|-------|-------|-------|-------|-------|-------|-------|-------|-------|
| Chest | 32-34 | 35-37 | 38-40 | 41-43 | 44-46 | 47-49 | 50-53 | 54-57 |

COLOR INFORMATION



Battleship Grey



True Black



True Navy

3 ABC CARDS

#304 Stadium Seat

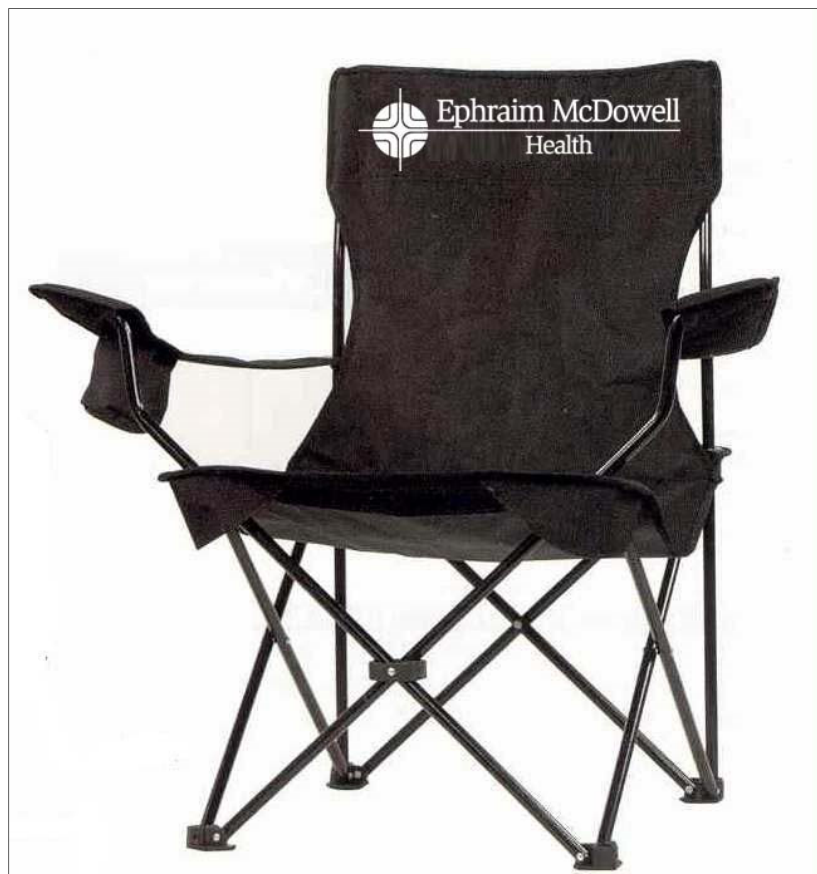


Color :
Black



3 ABC CARDS

#305 Recreational Chair



Color: Royal Blue

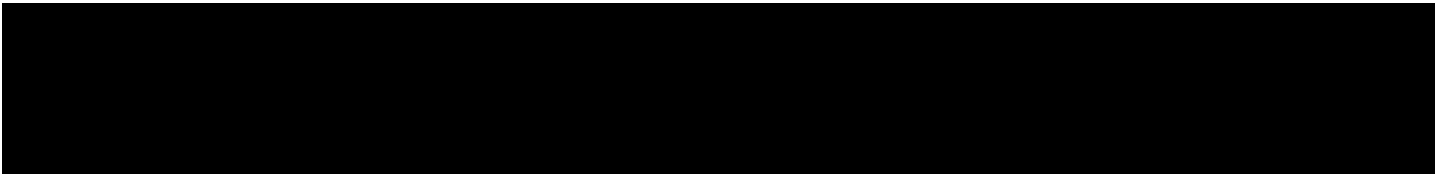


#306 Ultimate Tote



Natural Canvas with Navy trim

- Durable 10-ounce, 100% cotton twill, contrast canvas bottom
- Deep exterior pocket for easy decoration
- Cotton web handles
- Dimensions: 14"h x 14.5"w x 5.5"d



#309 OGIO Apex Rucksack



This rucksack keeps your laptop and other tech gear well-protected, while the two-tone crosshatch pattern adds modern street cred.

- TPE-backed two-tone 600D poly
- Easy-access top-loading padded laptop compartment
- Padded tablet/e-reader sleeve
- Front flap zippered pocket for easy decoration access
- Double buckle front flap closure
- Interior mesh organizer pockets
- Front accessory pocket with mesh pockets
- Side beverage pocket
- Side accessory pocket
- Laptop sleeve: 15.5"h x 10.5"w x 1"d; fits most 17" laptops
- Dimensions: 19"h x 12.25"w x 6.5"d
- Capacity: 1,300 cu.in./21L
- Weight: 1.4 lbs./0.57kg

Note: Bags not intended for use by children

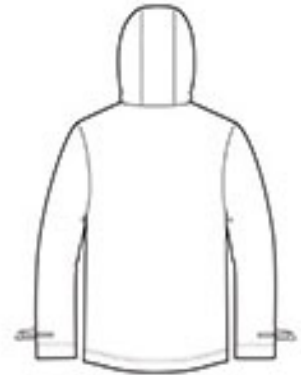
- Dimensions: 19"h x 12.25"w x 6.5"d

3 ABC CARDS

#310 Northwest Slicker



front



back

- 100% PU-coated polyester
- 100% polyester mesh-lined body and hood
- 100% polyester-lined sleeves
- 1500MM fabric waterproof rating
- Attached hood with adjustable locking drawcord
- Molded zipper
- Grommets for breathability under arms
- Adjustable self-fabric tab cuffs with hook and loop closures and reflective detail
- Front zippered pockets with reflective detail
- Port Pocket™ for easy embroidery access
- Open hem with adjustable locking drawcord



Black
PMS NTR BLACK CPMS 532C



Navy



Northern Grey
PMS 424C



Slicker Yellow
PMS 1235C

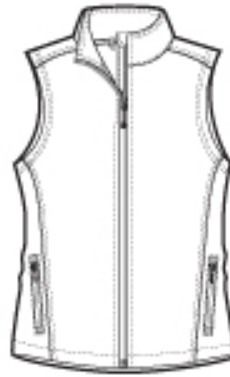
**Adult Sizes:
XS—4XL**

PRODUCT MEASUREMENTS

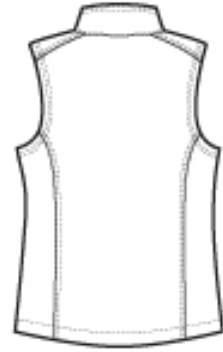
| | XS | S | M | L | XL | 2XL | 3XL | 4XL |
|--------------------------------|--------|--------|--------|--------|--------|--------|--------|--------|
| Chest Width | 20 1/2 | 22 | 23 1/2 | 25 | 26 1/2 | 28 | 30 | 32 |
| Body Length at Back | 27 1/4 | 28 1/4 | 29 1/4 | 30 1/4 | 31 1/4 | 32 1/4 | 32 3/4 | 33 1/4 |
| Sleeve Length from Center Back | 34 1/2 | 35 1/4 | 36 | 36 3/4 | 37 1/2 | 38 1/4 | 39 | 39 3/4 |

3 ABC CARDS

#311 Ladies Soft Shell Vest



front



back

- 100% polyester woven shell bonded to a water-resistant film insert and a 100% polyester microfleece lining
- 1000MM fabric waterproof rating
- 1000G/M2 fabric breathability rating
- Reverse coil zippers
- Zip-through cadet collar with chin guard
- Front zippered pockets

Ladies Sizes: XS—4XL



Battleship Grey



Black



Black Charcoal



Dress Blue Navy



Marshmallow

SIZE CHART

| | XS | S | M | L | XL | XXL | 3XL | 4XL |
|------|-------|-------|-------|-------|-------|-------|-------|-------|
| Size | 2 | 4/6 | 8/10 | 12/14 | 16/18 | 20/22 | 24/26 | 28/30 |
| Bust | 32-34 | 35-36 | 37-38 | 39-41 | 42-44 | 45-47 | 48-51 | 52-55 |

3 ABC CARDS

#312 Littman Lightweight II S.E. Stethoscope



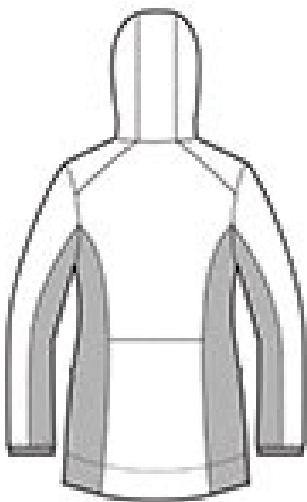
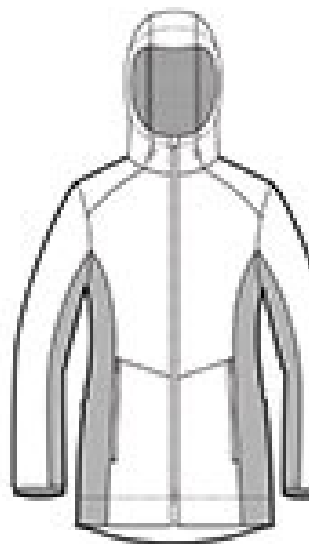
Acoustic with a tunable diaphragm, 28"
Black

3 ABC CARDS

#313 Ladies Legacy Jacket



- 100% polyester knit shell bonded to a water-resistant film insert and a 100% polyester mesh interior
- 1000MM fabric waterproof rating
- 1000G/M² fabric breathability rating
- Longer length for additional coverage
- Three-panel hood with adjustable locking drawcord
- Reverse coil two-way center front zipper
- Front zippered pockets
- Elastic binding at cuffs
- Open drop tail hem



Deep Black
PMS BLACK C



Dress Blue Navy
PMS 533C



Grey Steel/ Deep
Black

| | XS | S | M | L | XL | XXL | 3XL | 4XL |
|------|-------|-------|-------|-------|-------|-------|-------|-------|
| Size | 2 | 4/6 | 8/10 | 12/14 | 16/18 | 20/22 | 24/26 | 28/30 |
| Bust | 32-34 | 35-36 | 37-38 | 39-41 | 42-44 | 45-47 | 48-51 | 52-55 |

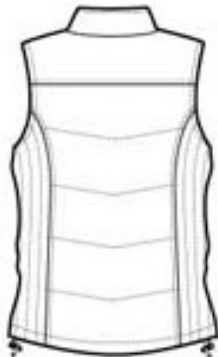
Sizes: XS—4XL

3 ABC CARDS

#314 Ladies Puffy Vest



front



back

- 100% polyester shell
- 100% polyester lining
- Reverse coil center front zipper
- Interior storm flap
- Interior zippered pocket
- Interior pocket with drawcord and toggle
- Front zippered pockets
- Port Pocket™ for easy embroidery access
- Open hem with drawcord and toggles for adjustability

Sizes: XS—4XL



Battleship Grey



Black



Black Charcoal



Dress Blue Navy



Marshmallow

SIZE CHART

| | XS | S | M | L | XL | XXL | 3XL | 4XL |
|------|-------|-------|-------|-------|-------|-------|-------|-------|
| Size | 2 | 4/6 | 8/10 | 12/14 | 16/18 | 20/22 | 24/26 | 28/30 |
| Bust | 32-34 | 35-36 | 37-38 | 39-41 | 42-44 | 45-47 | 48-51 | 52-55 |

3 ABC CARDS

#316 Rolling Cooler Bag



With a 48-can capacity, you'll be the hit of the tailgating party when you roll up with this durable cooler. Collapsible design makes for easy storage.

- 600 denier polyester, 420 dobby polyester
- Web top and side handles
- Zippered opening
- Easy-to-clean, heat-sealed, water resistant lining
- Removable bottom board
- Zippered front pocket
- One-hand push button extension handle; extends to 21"
- Smooth, durable inline skate wheels
- Dimensions: 14"h x 14"w x 11"d (expanded); 14"h x 14"w x 7"d (collapsed); Approx. 2,156 cubic inches (expanded)

PICK YOUR TRIM COLOR!

COLOR



Black
PMS 447 C



Red
PMS 384 C



Twilight Blue
PMS 7603 C

3 ABC CARDS

#317 Men's Puffy Vest



- 100% polyester shell, 100% polyester lining, 6-ounce polyfill
- Zip-through cadet collar
- Hidden zippered chest pocket
- Reverse coil zipper
- Interior storm flap
- Interior zippered pocket
- Interior pocket with drawcord and toggle
- Front zippered pockets
- Port Pocket™ for easy embroidery access
- Open hem with drawcord and toggles for adjustability

Adult Sizes: XS—4XL



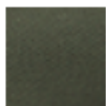
Black/ Black
PMS NTR BLACK CPMS 432C



Dark Slate/ Black



Mediterranean Blue/Olive/ Cayenne
Black



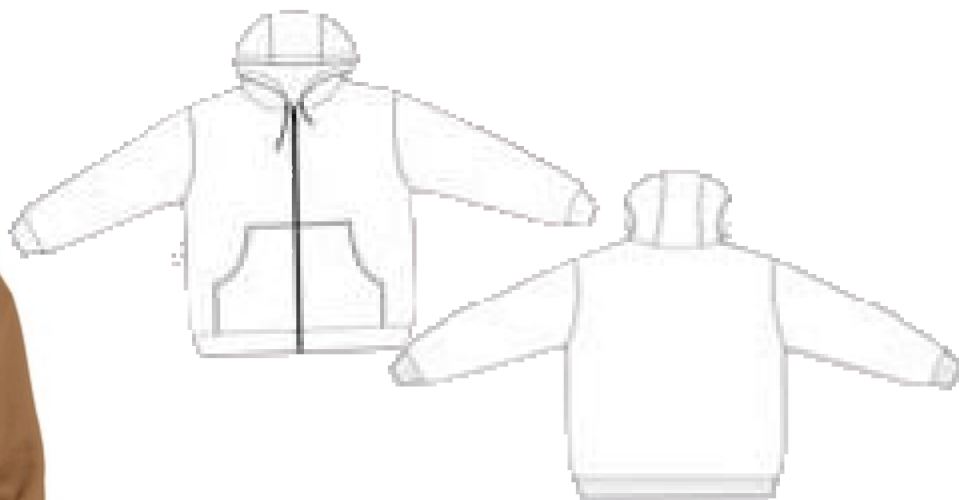
PMS 7771C

SIZE CHART

| | XS | S | M | L | XL | 2XL | 3XL | 4XL |
|-------|-------|-------|-------|-------|-------|-------|-------|-------|
| Chest | 32-34 | 35-37 | 38-40 | 41-43 | 44-46 | 47-49 | 50-53 | 54-57 |

3 ABC CARDS

#318 Heavyweight Full Zip Hooded Sweatshirt w/ Thermal Lining



- 12-ounce, 60/40 cotton/poly
- 9-ounce, 100% polyester thermal lining for extra warmth
- Interior cellphone pocket
- Rib knit cuffs and waistband
- Brass zipper
- Drawcord with brass eyelets
- Front hand warmer pockets
- Port Pocket™ for easy embroidery access

Adult Sizes: XS—6XL



Athletic Heather



Black



Duck Brown



Navy

SIZE CHART

| | XS | S | M | L | XL | 2XL | 3XL | 4XL | 5XL | 6XL |
|-------|-------|-------|-------|-------|-------|-------|-------|-------|-------|-------|
| Chest | 32-34 | 35-37 | 38-40 | 41-43 | 44-46 | 47-49 | 50-53 | 54-57 | 58-60 | 61-63 |

3 ABC CARDS

#319 Sonic Sling Pack

Grey/Black



Sulfur/Black



Deep Red/Black



Black
Black



Cobalt Blue/



**Pick
Your
Color!**

- 420D poly double ripstop
- Drawstring top
- Front zippered pocket for easy decoration access
- Side beverage pocket
- Side zippered valuables pocket
- Stretch mesh phone pocket on shoulder strap
- Dimensions: 18.75"h x 12.25"w x 4.5"d
- Capacity: 1,200 cu.in./19.7 L
- Weight: 0.25 lbs./0.71 kg

3 ABC CARDS

#320 Healthmate Digital Blood Pressure Monitor



Includes: Four AA batteries, DC power port, & nylon storage case

Cuff Range: 13" - 17" (arm circumference)

3 ABC CARDS

#321 Ladies Knit Blazer



- 8.5-ounce, 52/48 cotton/poly ponte knit
- Peak lapel
- Front and back darts
- Welt pockets
- 2-button front closure
- Back vent

Sizes-XS-4XL



Battleship Grey



Black



Deep Navy



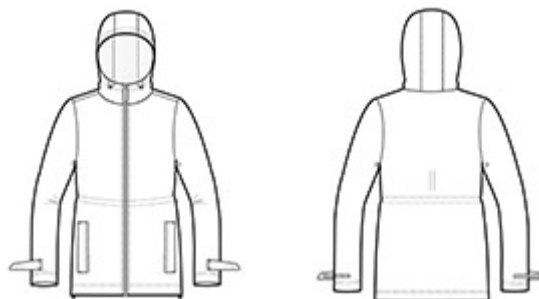
Rich Red

SIZE CHART

| | XS | S | M | L | XL | XXL | 3XL | 4XL |
|------|-------|-------|-------|-------|-------|-------|-------|-------|
| Size | 2 | 4/6 | 8/10 | 12/14 | 16/18 | 20/22 | 24/26 | 28/30 |
| Bust | 32-34 | 35-36 | 37-38 | 39-41 | 42-44 | 45-47 | 48-51 | 52-55 |

3 ABC CARDS

#322 Ladies Northwest Slicker



- 100% PU-coated polyester
- 100% polyester mesh-lined body and hood
- 100% polyester-lined sleeves
- 1500MM fabric waterproof rating
- Attached hood with adjustable locking drawcord
- Molded zipper
- Grommets for breathability under arms
- Longer length with adjustable locking drawcord waist
- Adjustable self-fabric tab cuffs with hook and loop closures and reflective detail
- Front zippered pockets with reflective detail
- Port Pocket™ for easy embroidery access
- Open hem with adjustable locking drawcord
- Reflective details at back

Ladies Sizes: XS—4XL



Black



Navy



Northern Grey

SIZE CHART

| | XS | S | M | L | XL | XXL | 3XL | 4XL |
|------|-------|-------|-------|-------|-------|-------|-------|-------|
| Size | 2 | 4/6 | 8/10 | 12/14 | 16/18 | 20/22 | 24/26 | 28/30 |
| Bust | 32-34 | 35-36 | 37-38 | 39-41 | 42-44 | 45-47 | 48-51 | 52-55 |

3 ABC CARDS

#323 4 Can Cooler & Warmer

- Ol#Golk#lq#'ebj f^ip#
- Qbob'qql#hbm#lla.#_bsbo^dop.##
###j baf'fkbp#'ll#^ka#kdp#
- Qlt bclpmmiv<#ED1BD#
- Tfwb<#; 07a''u#9t''u#32q#
- I^p#D^av#I^kaib#



3 ABC CARDS

#324 Nike Men's Dri-fit Micro Pique 2.0 Polo



**Men Sizes: XS-4XL
LT-4XLT**

Product Description

The best-selling Nike polo just got better. Still engineered from soft, stretchable micro pique fabric, the Nike Dri-FIT Micro Pique 2.0 Polo is now 5 styles strong. It delivers unparalleled comfort with Dri-FIT moisture management technology and features updated design lines and fit. Flat knit collar and three-button placket. Rolled-forward shoulder seams, open hem sleeves and open hem. White or black pearlized buttons selected to complement the shirt color. Contrast Swoosh logo is embroidered on the left sleeve. Made of 4.3-ounce, 100% polyester Dri-FIT fabric.

SIZE CHART

| | XS | S | M | L | XL | 2XL | 3XL | 4XL |
|-------|-------|-------------|-------------|---------|-------------|-----------------|-------------|---------|
| Chest | 32-35 | 35 - 37 1/2 | 37 1/2 - 41 | 41 - 44 | 44 - 48 1/2 | 48 1/2 - 53 1/2 | 53 1/2 - 58 | 58 - 63 |

3 ABC CARDS

#325 Ladies Nike Dri-fit Micro Pique Polo



Stay cool when things heat up. Engineered with Dri-FIT fabric which provides moisture management technology. This comfortable micro pique polo has an exceptionally soft hand. Tailored for a feminine fit, the design features a Johnny collar and open hem sleeves. The contrast Swoosh design trademark is embroidered on the left sleeve. Made of 4.4-ounce, 100% polyester.

Ladies Sizes: XS—2XL



SIZE CHART

| | S | M | L | XL | 2XL |
|------|-----------------|-------------|---------|-------------|-----------------|
| Size | 4/6 | 8/10 | 12/14 | 16/18 | 20 |
| Bust | 32 1/2 - 35 1/2 | 35 1/2 - 38 | 38 - 41 | 41 - 44 1/2 | 44 1/2 - 48 1/2 |

3 ABC CARDS

#326 Plush Microfleece Shawl Collar Robe



Sizes S/M, M/XL

Pamper yourself at the spa, resort or at home in this luxurious shawl collar robe that will keep you warm and cozy.

- 14.5-ounce linear yard, 100% polyester fleece
- Two patch pockets at hips
- Self-fabric belt and loops for easy adjustment
- Measures: 32"-40" chest, 47" length (S/M); 40"-54" chest, 50" length (L/XL)



Deep Smoke



Marshmallow



Pink Raspberry

3 ABC CARDS

#327 Just Love Velour Robe

Scalloped Texture



- **EXPERIENCE SUPREME COMFORT:** Designed using the finest ultra-soft velour, this house robe for women makes for absolutely comfortable nightwear. Pair it with your favorite pjs or lounge clothes and enjoy the snug warmth and seductive feel on your skin.
- **SLIP INTO PRETTINESS:** We've complemented the cute scalloped pattern and classic look of the velour lounge robe with calming colors that adds a beautifully classic touch to loungewear. Whether you're reading a book or enjoying some good T.V, you'll look just as amazing as you feel.
- **PROVIDES A GREAT FIT:** Women of all sizes will get a well-fitting luxury night robe from our wide range of sizes that accommodate petite to plus size shapes. These sleepwear robes are designed to beautifully fall around the knee to give them a sexy appeal.
- **FINISHED WITH CARE:** You won't find any loose threads or unraveled seams on the soft velour robes. We use the highest quality materials to ensure these beautiful nighties for women remain in beautiful condition even after multiple washes.

Sizes: XS-3XL

Colors:

1. Light gray
2. Cream
3. Rose
4. Coral
5. Emerald
6. Light Blue



3 ABC CARDS

#328 Ladies Full Zip Jacket/ with personalized name



- 6.8-ounce, 90/10 poly/spandex jersey
- Cadet collar with contrast piping
- Tag-free label
- Taped neck
- Contrast reverse coil zipper
- Set-in sleeves
- Contrast cuff binding
- Thumbholes to keep hands warm
- Contrast trim at front pockets and thumbholes

Ladies Sizes: XS—4XL

Ladies jackets are form fitted and fit smaller.



Black/ Charcoal
Grey



Black/ True Red



Black/ True Royal



Charcoal Grey
ACK C Heather/ Charcoal
Grey



Charcoal Grey
Heather/ Charge
Green



Charcoal Grey
Heather/ Hot Coral



Charcoal Grey
Heather/ Pink Rush



Charcoal Grey
Heather/ True Navy

SIZE CHART

| | XS | S | M | L | XL | XXL | 3XL | 4XL |
|------|-------|-------|-------|-------|-------|-------|-------|-------|
| Size | 2 | 4/6 | 8/10 | 12/14 | 16/18 | 20/22 | 24/26 | 28/30 |
| Bust | 32-34 | 35-36 | 37-38 | 39-41 | 42-44 | 45-47 | 48-51 | 52-55 |

3 ABC CARDS

#329 Universal Full Zip Jacket with personalized name



- 6.8-ounce, 90/10 poly/spandex jersey
- Cadet collar with contrast piping
- Tag-free label
- Taped neck
- Contrast reverse coil zipper
- Set-in sleeves
- Contrast cuff binding
- Contrast welt front pockets

Adult Sizes: XS—4XL

Universal Sizing, not form fitted.



Black/ Charcoal
Grey



Black/ True Red



Black/ True Royal



Charcoal Grey
Heather/ Charcoal
Grey



Charcoal Grey
Heather/ Charge
Green



Charcoal Grey
Heather/ True Navy

SIZE CHART

| | XS | S | M | L | XL | 2XL | 3XL | 4XL |
|-------|-------|-------|-------|-------|-------|-------|-------|-------|
| Chest | 32-34 | 35-37 | 38-40 | 41-43 | 44-46 | 47-49 | 50-53 | 54-57 |

3 ABC CARDS

#331 Nike Long Sleeve Dri-fit Stretch Tech Polo

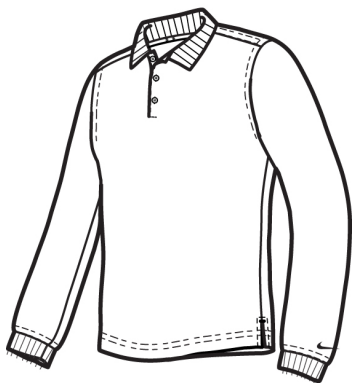


Long sleeves elevate this polo to another level of sophistication while Dri-FIT moisture management technology adds unparalleled performance. Stretch fabric for hassle-free swinging motion. Flat knit collar and cuffs. Heat transfer label for tag-free comfort. Three-button placket. Dyed-to-match buttons on White, Black and Midnight Navy. White buttons on Varsity Red, Anthracite and Blue Sapphire. The contrast Swoosh design trademark is embroidered on the lower left sleeve. Side vents. Made of 5-ounce, 100% polyester Dri-FIT fabric.

CARE INSTRUCTIONS

Machine wash cold. wash inside out; wash with like colors. Do not use softeners. Do not use bleach. Tumble dry low. Do not iron.do not dry clean

Men Sizes: XS—4XL



Anthracite



Black



Blue Sapphire



Midnight Navy



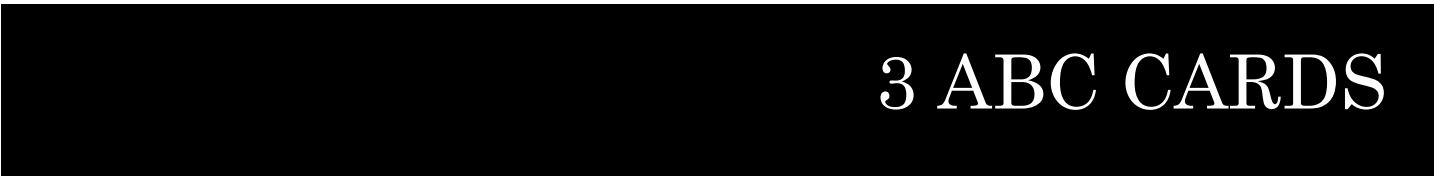
Varsity Red



White

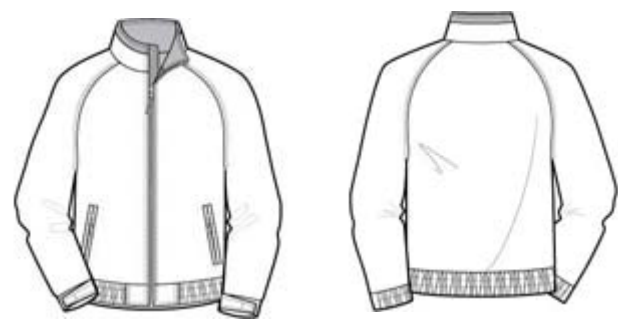
SIZE CHART

| | XS | S | M | L | XL | 2XL | 3XL | 4XL |
|---------------------|-------|-------------|-------------|---------|-------------|-----------------|-------------|---------|
| Chest Size (inches) | 32-35 | 35 - 37 1/2 | 37 1/2 - 41 | 41 - 44 | 44 - 48 1/2 | 48 1/2 - 53 1/2 | 53 1/2 - 58 | 58 - 63 |



3 ABC CARDS

#332 Port Authority Competitor Jacket



A preferred classic, the Competitor™ Jacket is a light-weight alternative to the Challenger™ Jacket (J754). With sporty style, this workplace and off-hours favorite has re-inforced seams and sturdy Teklon® nylon to keep wind, rain and other elements at bay.

- Teklon® nylon shell
- 6.8-ounce, 100% polyester fleece body lining
- Poly sleeve lining for easy on/off
- Molded center front zipper
- Slash zippered pockets
- Interior zippered pocket
- Elastic cuffs with adjustable hook and loop tabs
- Elastic waistband
- Port Pocket™ for easy embroidery access

Sizes: XS-6X

CARE INSTRUCTIONS

Machine wash cold. Tumble dry low. Do not dry clean. Do not iron. Do not bleach.



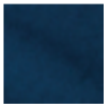
Deep Smoke/ Black True Black/ True Black



True Hunter/ True Navy



True Navy/ Grey Heather

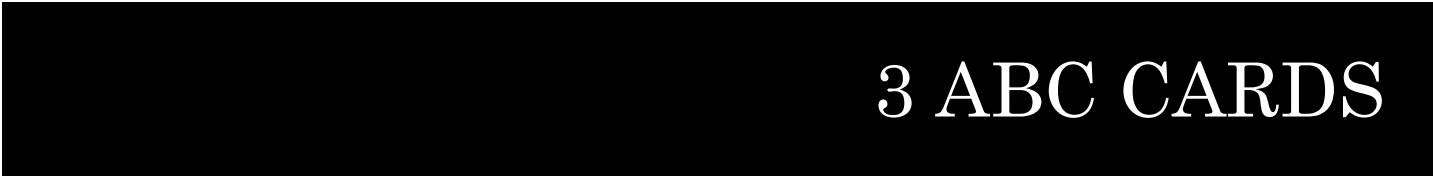


True Royal/ True Navy



SIZE CHART

| | XS | S | M | L | XL | 2XL | 3XL | 4XL | 5XL | 6XL |
|-------|-------|-------|-------|-------|-------|-------|-------|-------|-------|-------|
| Chest | 32-34 | 35-37 | 38-40 | 41-43 | 44-46 | 47-49 | 50-53 | 54-57 | 58-60 | 61-63 |



3 ABC CARDS

#333

Carhartt Utility Tote



18"h x 12"w x 6"l

Tools not included

This rugged tote is versatile enough to lug around all your work gear, keep near your work bench or toss in the truck and haul everything you need-regardless of light rain. Made from durable heavyweight canvas, this ultra-tough tote never stops performing. A sturdy base helps ensure it can stand on its own.

- 600D polyester
- Rain Defender® durable water repellent (DWR)
- Large opening into main compartment
- Dual webbing haul handles with comfort grip
- 11 exterior pockets, 6 interior pockets and 7 interior loops
- Sturdy base to help tote remain upright
- Carhartt label sewn on front
- Dimensions: 9.5"h x 13.5"w x 8"l

3 ABC CARDS

#334

Carhartt Midweight Hooded Sweatshirt



Sometimes Mother Nature can't make up her mind. This sweatshirt works perfectly as a layer or by itself, allowing you to adapt with the weather.

- 10.5-ounce, 50/50 cotton/poly blend
- 70/30 cotton/poly blend (Heather Grey)
- Attached three-piece hood with drawcord closure
- Front hand warmer pocket
- Stretchable, spandex-reinforced, rib knit cuffs and waistband
- Carhartt-strong, triple-stitched main seams
- Carhartt label sewn on hand w
- Loose fit

CARE INSTRUCTIONS

Machine wash cold like colors. Dry low.



FRONT VIEW

SMALL-4X

COLOR INFORMATION



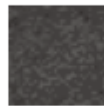
Black



Brite Lime



Brite Orange



Carbon Heather



Dark Brown



Heather Grey



Moss



New Navy

SIZE CHART

| | S | M | L | XL | 2XL | 3XL | 4XL |
|-------|-------|-------|-------|-------|-------|-------|-------|
| Chest | 34-36 | 38-40 | 42-44 | 46-48 | 50-52 | 54-56 | 58-60 |

3 ABC CARDS

#336 Port Authority Ladies Vertical Full Zip w/name personalization



front



back

Product Description

With an inviting vertical texture, soft cotton interior and durable polyester exterior, this easy-to-layer style will have you thinking beyond a sweater for workdays or the weekend.

- 7.5-ounce, 63/37 poly/cotton
- Twill tape trim at neck
- Contrast color inside cadet collar
- Front and back shoulder seaming
- Coil zipper
- Open cuffs
- Open hem

Sizes XS-4X



SIZE CHART

| | XS | S | M | L | XL | XXL | 3XL | 4XL |
|------|-------|-------|-------|-------|-------|-------|-------|-------|
| Size | 2 | 4/6 | 8/10 | 12/14 | 16/18 | 20/22 | 24/26 | 28/30 |
| Bust | 32-34 | 35-36 | 37-38 | 39-41 | 42-44 | 45-47 | 48-51 | 52-55 |

COLOR INFORMATION



Black/Iron Grey

MS NTR BLACK CPMS 426 C



Iron Grey/Black



Regatta Blue/Iron

Grey



True Navy/Iron

Grey

3 ABC CARDS

#338 Port Authority Wheeled Backpack



Color:
Dark Grey/ Black

Take the strain off by rolling this wheeled pack, or use the shoulder straps to carry it like a backpack.

- 600 denier polyester with 300 denier mini ripstop accents and reinforced bottom
- Large main compartment with hooded zip closure
- 12-inch deep top front pocket
- Lower front pocket with padded protection
- One-hand push button pulley system for easy use and stowage; handle extends to 18.5"
- Air mesh shoulder straps tuck away into padded back
- Wheel cover stashes into zip pocket on back
- Smooth, durable inline skate wheels
- Dimensions: 18.5"h x 13"w x 7.9"d; Approx. 1,900 cubic inches

3 ABC CARDS